



**PATENT  
PENDING**

Item #: \_\_\_\_\_ Qty #: \_\_\_\_\_

Model #: \_\_\_\_\_

Project #: \_\_\_\_\_



Shown With  
3 Tier Drawer Set Up



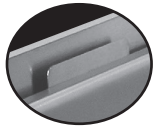
# Revolutionary New SHD Series Drawer with Integral Drawer Slides

- Stainless Steel Front & Sides
- Self Closing Drawer with Noise Control
- Drawer "Safety Stop" Tab
- Removable Stainless Steel Insert
- Units Can Be Stacked to Create Multiple Tier Drawers
- Hardware Included
- NSF Approved



## Drawers Stack with Ease to Create Tier Drawers!

*Easily installs in field*

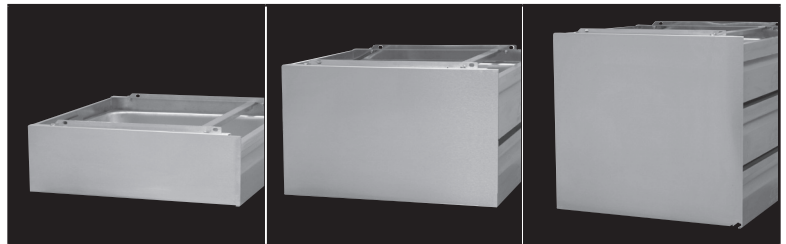
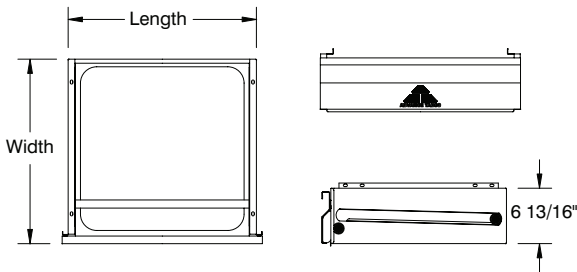


Features a  
"Safety Stop" Tab

MODEL #	Length	Width	Insert
SHD-2015	23 1/8"	17 1/2"	20" x 15" x 5"
SHD-2020	23 1/8"	23 1/8"	20" x 20" x 5"
SHD-1520	17 1/2"	23 1/8"	15" x 20" x 5"

## OPTIONAL CONCEALED SIDE PANELS For 20"x20" Drawers

(1 for needed each side)



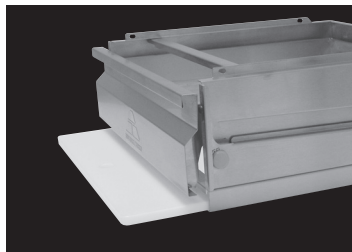
1 Tier Drawer:  
TA-SHD-1 each side

2 Tier Drawers:  
TA-SHD-2 each side

3 Tier Drawers:  
TA-SHD-3 each side

## SHD SERIES MODIFICATIONS & ACCESSORIES

- Concealed Side Panel for 20"x15" Drawer ..... TA-2 ea.
- Drawer Lock ..... TA-14SHD
- Pad Lock Hasp ..... TA-13
- Poly Board Storage Brackets  
For SHD Drawers ..... TA-97SHD
- 5/8" Thick Poly Board Cutting Boards  
For SHD Drawers ..... TA-41SHD ea.



TA-97SHD Polyboard Storage Bracket  
(Installs in field. Hardware Included)



Rear View of Multiple Stacked Drawers  
Drawer Seam Exposed



Customer Service Available To Assist You **1-800-645-3166** 8:30 am - 8:00 pm E.S.T.

Email Orders To: [customer@advancetabco.com](mailto:customer@advancetabco.com). For Smart Fabrication™ Quotes, Email To: [smartfab@advancetabco.com](mailto:smartfab@advancetabco.com) or Fax To: 631-586-2933

**NEW YORK**  
Fax: (631) 242-6900

**GEORGIA**  
Fax: (770) 775-5625

**TEXAS**  
Fax: (972) 932-4795

**NEVADA**  
Fax: (775) 972-1578